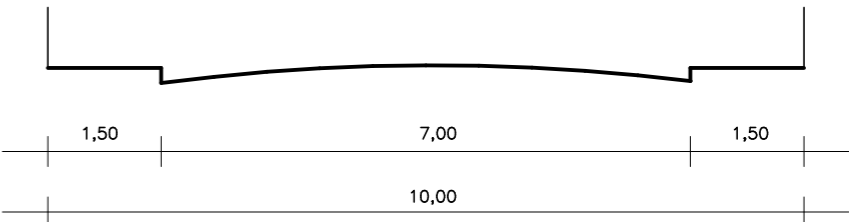
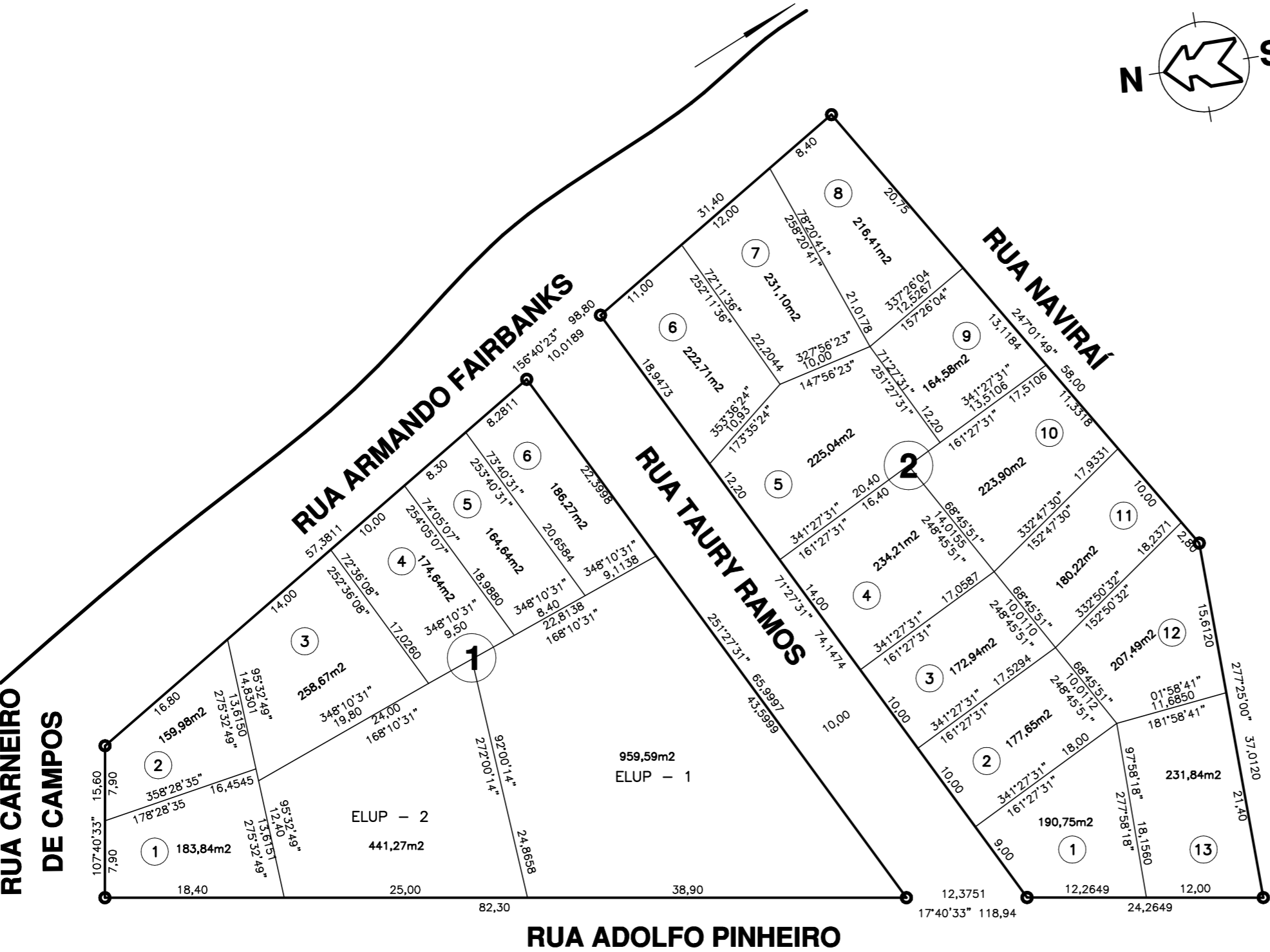


LOTEAM. MUN. ADOLFO PINHEIRO

PROPRIETÁRIO: PREFEITURA MUNICIPAL DE CAMPO GRANDE
LOCAL: VILA CAROLINA
ESCALA: 1/500



PERFIL DA RUA
ESCALA 1:100

QUADRO DE ÁREAS	
LOTES	3.806,88 m2
ELUP-1	959,59 m2
ELUP-1	441,27 m2
RUA	699,23 m2
TOTAL	5.906,97 m2